



# WI-FI CHRONOTHERMOSTAT



Perry's chronothermostats and thermostats range is expanded with the new smartphone chronothermostat.

**Simple to use:** the system, always connected to Internet through the Smartbox, can be viewed and programmed by smartphone, tablet or PC.

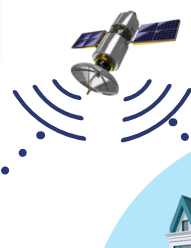
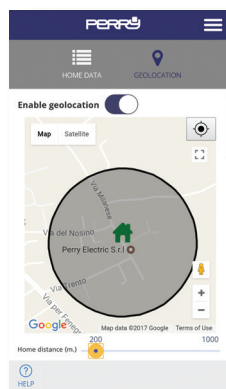
Advanced features:

- **Geolocation:** allows to reduce the programmed temperature leaving home.
- **Energy consumption reading:** the energy meter transmits energy consumption in real time.
- **Versatile:** works with any kind of system (floor, radiator or fan coil) with ON / OFF or proportional mode.
- **Opening windows:** automatic suspension of operation when a temperature variation of 2 ° C is detected in X minutes, then controlling the stability of the environment in order to restart the system.



## GEOLOCATION

The Wi-Fi chronothermostat adjusts the temperature intelligently by lowering it by an adjustable X ° C, depending on the distance (up to a maximum of 5 ° C) when leaving the house and raising up when returning.



**Wi-Fi chronothermostat configuration does not require complex operations, just an Ethernet cable!**

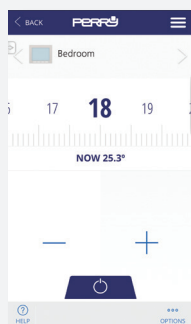


## \*EXPANDABLE (up to 30 devices):

- It is possible to divide the real estate unit into multiple thermal zones by adding additional chronothermostats for valve control on the distribution manifold.
- You can add energy meters (optional).



Zone display



Single zone control



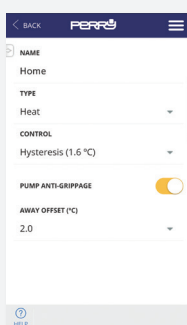
Zones programming

## TOTAL CONTROL

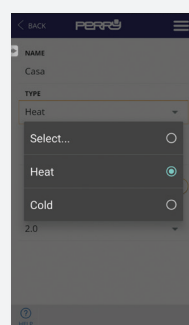
Through APP, it is possible to control and configure completely the system.

## FLEXIBLE

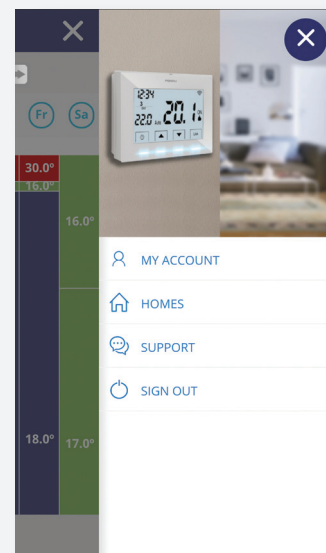
Suitable for any type of installation and requirement



Setup



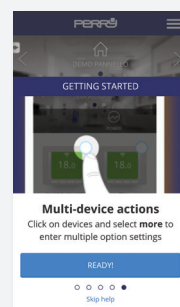
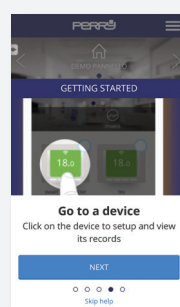
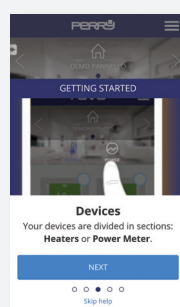
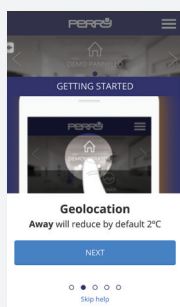
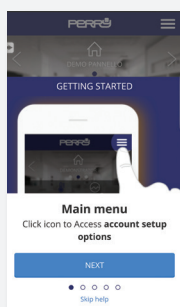
Controlled plant choices



User Identification

## EASY

Integrated Application Guide in APP



Programming menu, instruction manual



## FULL GLAZED SURFACE EFFECT

The special plastic finishing makes possible a pleasing "glass" effect.



## LED BACKLIT SCREEN

The 4.3 "LCD display is optimized for displaying and reading information even thanks to the white backlit.

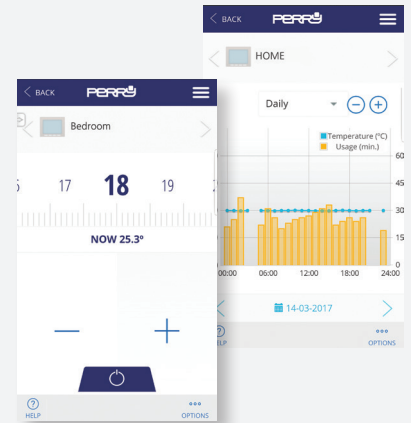




## TEMPERATURE MONITORING



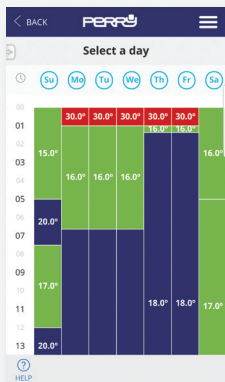
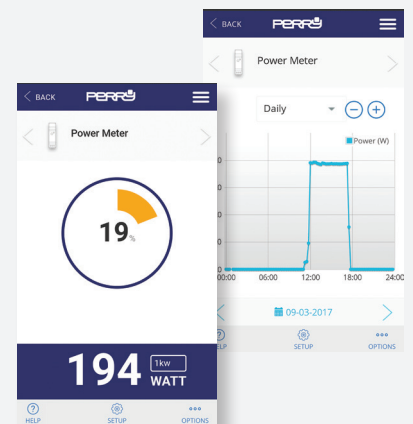
Real-time monitoring and programming, of multiple homes, is possible both from APP for iOS and Android, and from the portal [www.perryhome.it](http://www.perryhome.it)



## ELECTRIC CONSUMPTION MONITORING



The 1TX ME01 WIFI Energy Meter allows to monitor the electrical consumption by APP or browser.



## CONSUMPTION UNDER CONTROL

The "Perry Chronothermostat" App shows the temperatures with the visual indication of consumption through 3 colors: the green color means low consumption up to 18 degrees.



Under 18.0 ° C, the green color will indicate low consumption



Between 18.1 ° C and 21 ° C the blue color will indicate optimum consumption



From 21.1 ° C the red will indicate a consumption beyond the requirements

THE PERRY ELECTRIC WI-FI CRONOTHERMOSTAT, POWER SUPPLY 3V (**230V NOT REQUIRED**) ALLOWS TO REPLACE QUICKLY AND EASILY THE TRADITIONAL THERMOSTATS.



1TX CR028WIFI optimises home energy consumption





## 1TX CR028WIFI

### Wi-Fi Chronothermostat

- Wireless connection to Smartbox
- Equipped with backlit LCD with "White-LED" technology
- Glazed effect surface finishing for a modern design
- Easily programmable through the APP available for both Android and iOS
- Weekly programming
- 3V battery power
- Connects directly to the boiler

Power supply:	3V-2x1.5V AA (alkaline)
Operation:	ON / OFF or proportional mode
Differential:	adjustable 0.2-0.4-0.8-1,6°C with ON / OFF operation
Control time	10/15/20/25 minutes with proportional mode
Temperature levels:	up to 10 levels of temperature per day
Temperature:	adjustable accuracy of 0.5 °C
Command:	summer / winter
Minimum programming time of 1 minute	
Transmission:	868 MHz RF
PCB antenna:	build-in
Programmable events up to 10 per day	
AWAY function with temperature reduction from 0 to 5°C compared to programmed temperature	

### SPECIAL NOTES

Anti-limestone operation with pump control Low  
Battery signaling

## 1TX RX01WIFI

### Smartbox

- Connected via Ethernet to the router
- No configuration required
- Does not require a computer
- Powered by a micro USB adapter
- Handles data collected from various connected devices
- Connected to cloud sends data, downloads weather information and messages
- Each home requires a Smartbox

Power supply:	external 5V 500 mA
Consumption:	300 mA
Connection:	RJ45 for Ethernet
Indications by LED	
Transmission:	868 MHz RF
PCB antenna:	build-in

## 1TX ME01WIFI

### Power meter

- Measures and collects datas on electricity consumption in real time
- 1 DIN module

Power supply:	200-260V, 50 Hz
Consumption:	0.65-0.9 W
Indications by LED	
Transmission:	868 MHz RF
PCB antenna:	build-in



## 1TX CR028WIFIKIT

### Starter Kit

The ready-to-use solution to adjust the temperatures of your home directly from your smartphone.  
The kit includes the 1TX CR028WIFI chronothermostat and the Smartbox 1TX RX01WIFI.



**PERRY ELECTRIC s.r.l.**

Via Milanese, 11 - 22070 Veniano - CO - ITALY

T. +39 031 8944.1 - Fax +39 031 931848

[www.perry.it](http://www.perry.it) - [export@perry.it](mailto:export@perry.it)