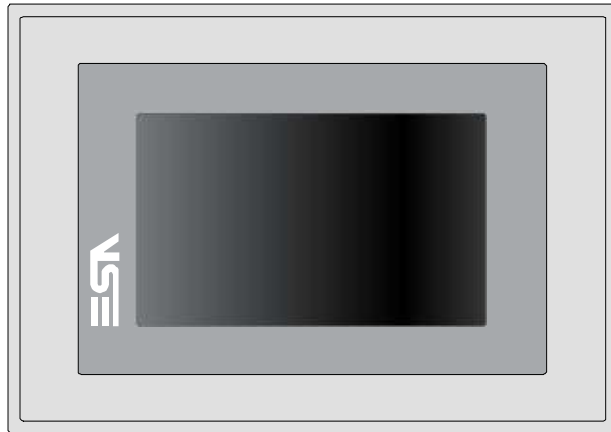


## 5. IT104 Video terminal



### Technical characteristics

The table below lists the main technical features of the product in question.

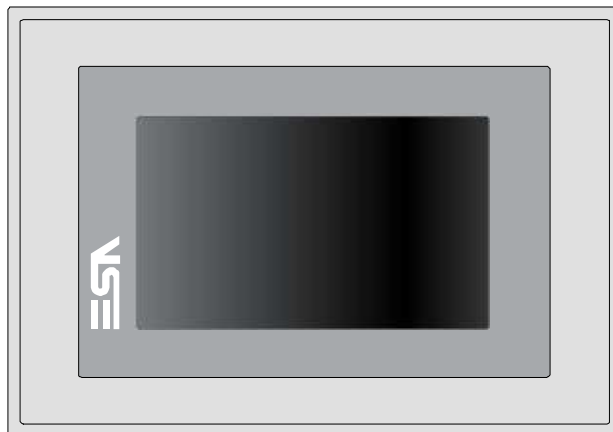
Terminal code	Terminal features					
IT104		X	0	X	X	X
Display						
Type	LCD 32 Shades of grey TFT	G				
	LCD 65k Colori TFT	T				
Format	Graphical	●	●	●	●	●
Resolution [pixels]	480 x 272 (4,3")	●	●	●	●	●
Visual area dimensions [mm]	95 x 54	●	●	●	●	●
Adjusting contrast	Software	●	●	●	●	●
	Automatic compensation	●	●	●	●	●
Set characters	TTF Windows ®	●	●	●	●	●
Backlighting						
Type	White Led	●	●	●	●	●
System memory						
Ram [Byte]	64M	●	●	●	●	●
Resident Flash Array [Byte]	32M	●	●	●	●	●

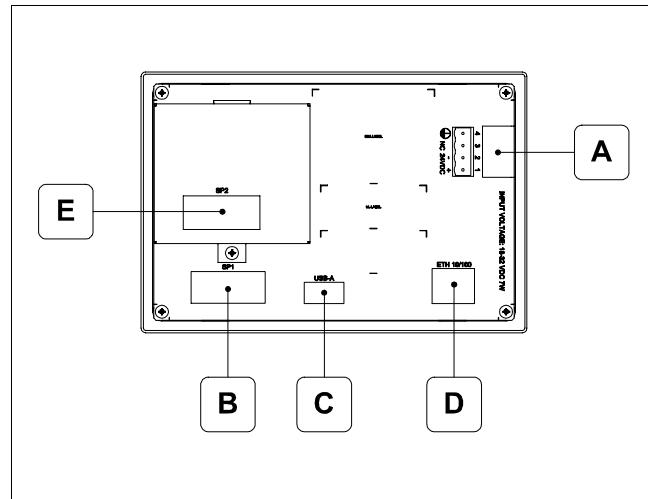
**18** Chapter 5

**IT104 Video terminal**

Terminal code	Terminal features					
IT104		X	0	X	X	X
<b>Interfaces</b>						
Serial Port SP1	RS232/RS485	●	●	1	●	●
Serial Port SP2	RS232/RS485	●	●	●	1	●
USB Host Port	v. 1.1	●	●	●	●	●
<b>Orologio</b>						
Orologio	Hardware (Supercapacitor - Min.72h)	●	●	●	●	●
<b>Networks</b>						
Integrated	Profibus-DP	●	●	●	3	●
	CAN	●	●	●	2	●
	Ethernet 10/100Mbit - RJ45	●	●	●	●	1
<b>Technical data</b>						
Power supply	24Vcc (18..32Vcc)					
Power consumption at 24Vcc	7 W					
Protective fuse	Ripristinabile Polyswitch					
Level of protection	IP65 (Front)					
Working temperature	0..+50°C					
Storage and transport temperature	-20..+60°C					
Humidity (without condensation)	<85%					
Weight	600 gr					
<b>Dimensions</b>						
External L x H x D [mm]	166 x 112 x 31 (50 con 2 porte seriali)					
Holes L x H [mm]	157 x 103					
<b>Certification</b>						
Marks and validations	CE, cULus, Atex(Gruppo II - cat.3 G/D - zona 2/22)					

**Front**

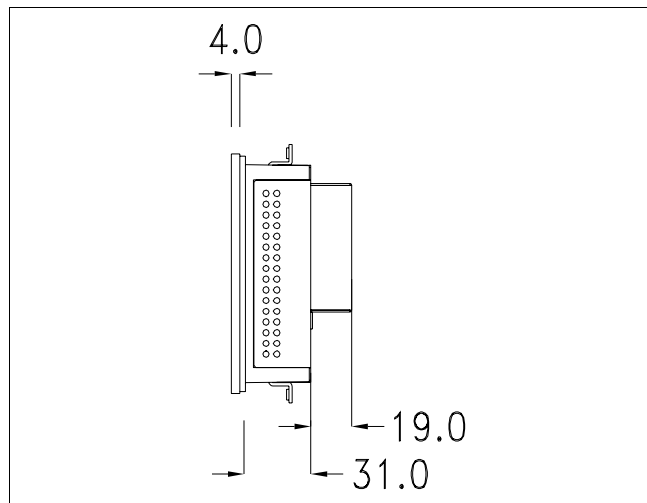
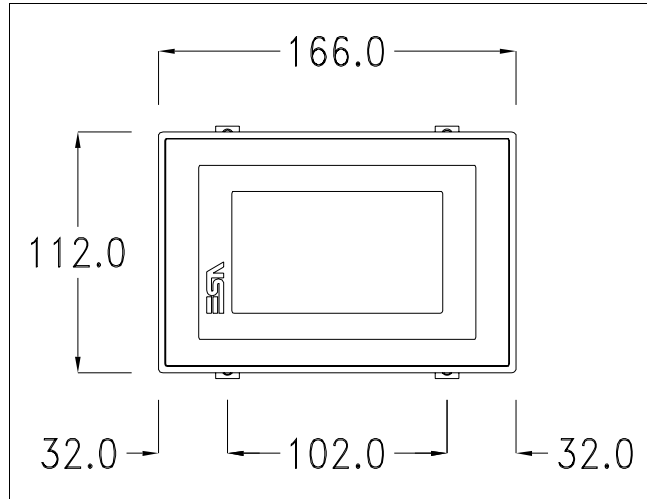


**IT104 Video terminal****Rear**

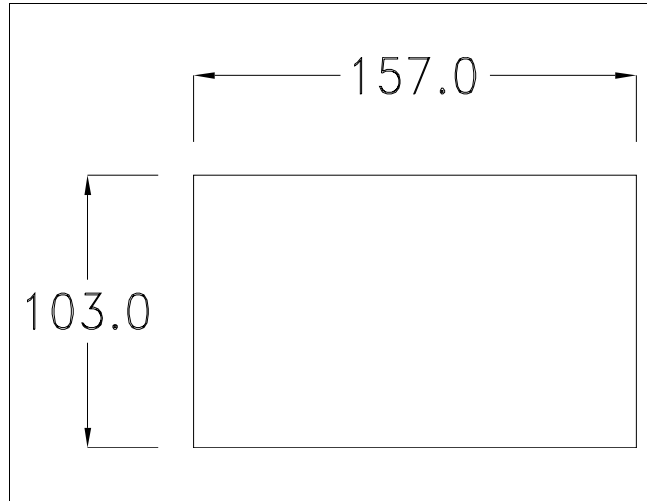
Posizione	Funzione
A	Power supply connector
B	IT104x x1xx SP1 serial port for communication with PLC/PC
C	USB-A Host Port
D	Ethernet 10/100 Base-T Port for connection to any network with standard TCP/IP protocol
E	IT104x xx1x SP2 serial port for communication with PLC/PC IT104x xx2x CAN Port IT104x xx3x Profibus-DP Port

**IT104 Video terminal**

**Dimensions  
and cutout**

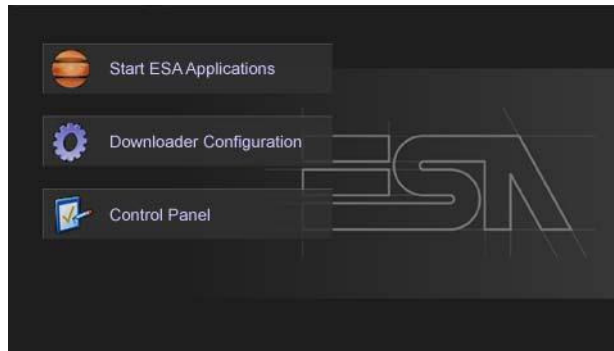


**IT104 Video terminal**



## IT104 Video terminal

### Service page



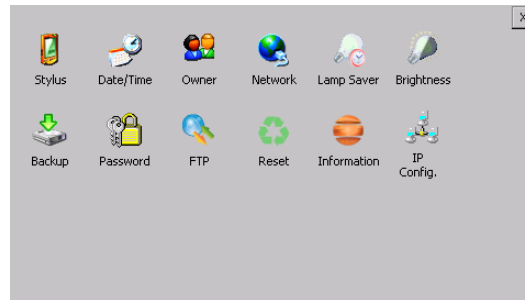
Service page which is accessed by pressing a button in the project (exit runtime).

- Start ESA Application executes the runtime of the project
- Download configuration opens the download configuration
- Control Panel opens the control panel



Clicking on downloader configurator, it is possible to configure the connection settings

- Disable disables the connection with the terminal
- Http enables ethernet connection with the terminal through an http protocol
- Eth TCP enable the ethernet connection with the terminal and allows to configure the port (slower but more precise).
- Eth UDP enable the ethernet connection with the terminal and allows to configure the port (faster but less precise).

**IT104 Video terminal****Control panel**

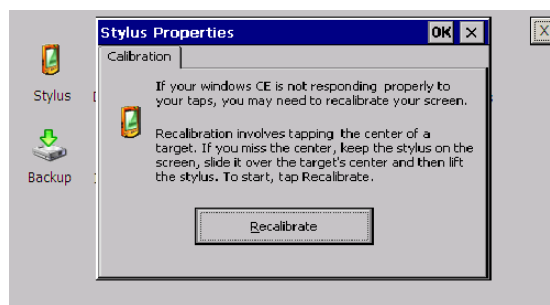
By clicking on each of these icons access is gained to the terminal configuration.

**Stylus**

The terminal uses a resistant type sensitive glass, for this type of glass to function correctly requires a calibration procedure (the terminal is supplied already calibrated), meaning the resistant area of the glass must be suitable to the visual area of the display.

If it is necessary to repeat the calibration procedure, it is possible to do so by following the instructions below.

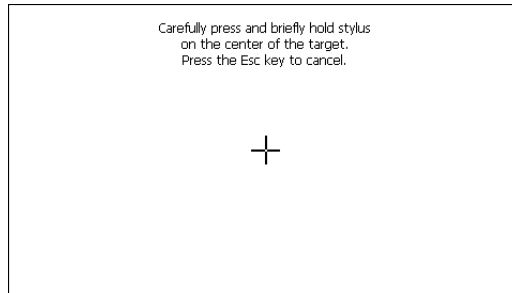
The procedure requires great attention because the precision of the keys' area depends from the calibration.



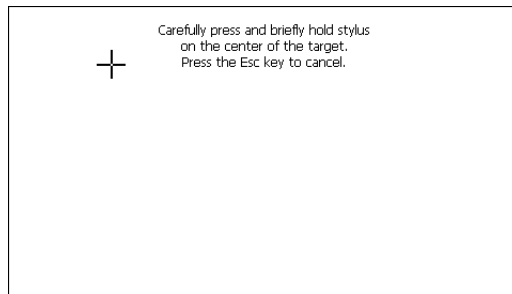
From the control panel click on the stylus icon and, subsequently, the following screens are displayed on the recalibrate key. Touch the screen near the crosses that appear on the screen.

**IT104 Video terminal**

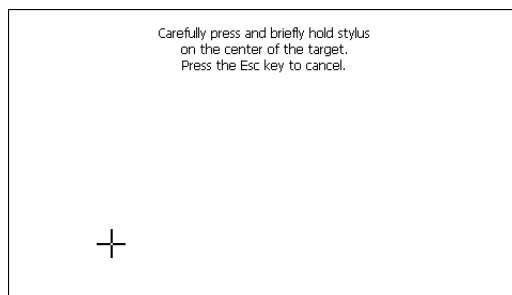
Step 1: touch the screen near the cross



Step 2: touch the screen near the cross



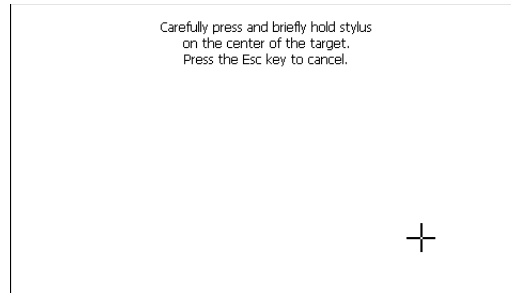
Step 3: touch the screen near the cross



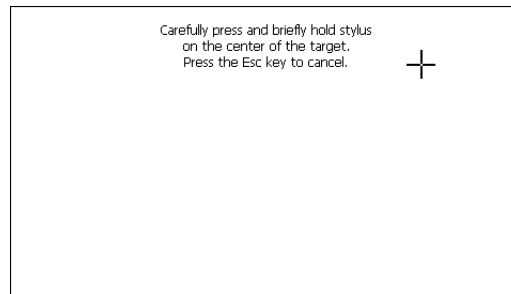


**IT104 Video terminal**

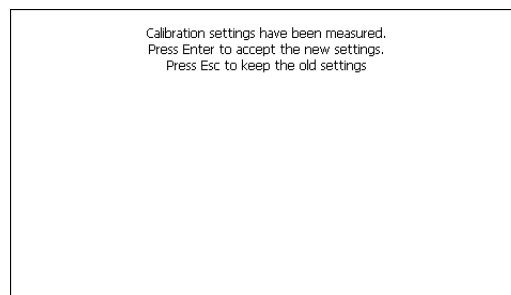
Step 4: touch the screen near the cross



Step 5: touch the screen near the cross



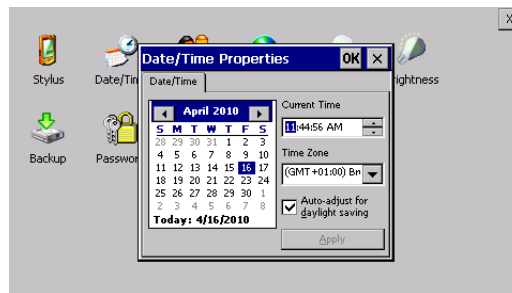
Step 6: Touch any part of the screen to end calibration.



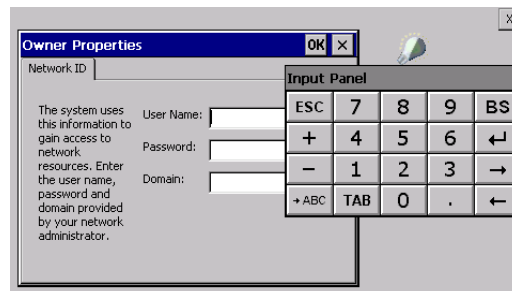
The terminal returns to the initial page. Clicking on ok confirms the calibration.

**Date/Time**

From here it is possible to amend: date, time and time zone. By enabling the "automatically adjust clock for daylight saving" check, the time is automatically updated at BST or GMT.



**Owner**



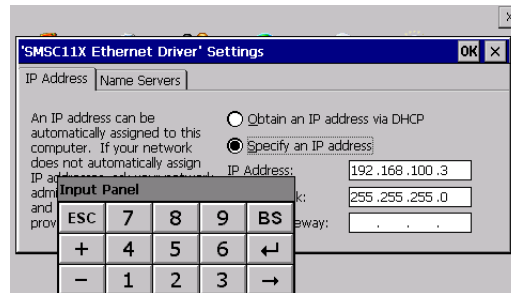
This information is used by Windows CE to access the network resources.

Username: enter the user name to access the network

Password: enter the password to access the network

Domain: enter the domain to access the network

In case the above data is unknown, contact the network administrator.

**IT104 Video terminal****Network****IP address**

Obtain an IP address via DHCP: by selecting this option, an IP address is automatically obtained (ensure that the DHCP server is enabled on the network)

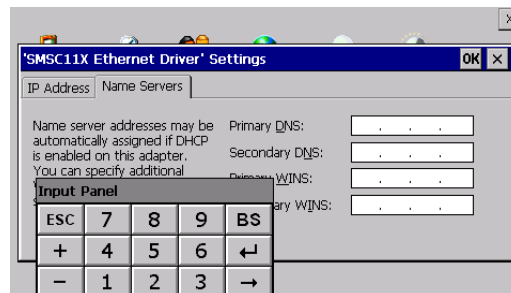
Specify an IP address: by selecting this option the parameters must be entered manually (IP Address, Subnet Mask, Default Gateway)

In case the above data is unknown, contact the network administrator.

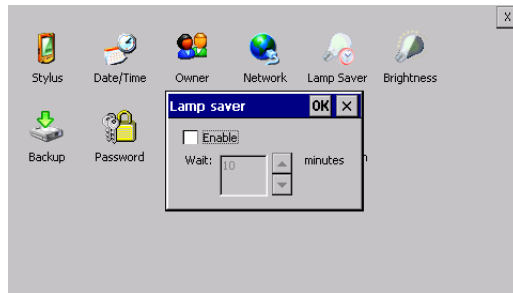
**Name servers**

If necessary, the parameters relating to the relative DNS or AL WINS must be entered

In case the above data is unknown, contact the network administrator.

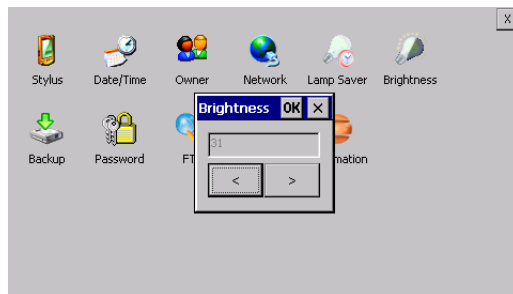


**Lamp Saver**

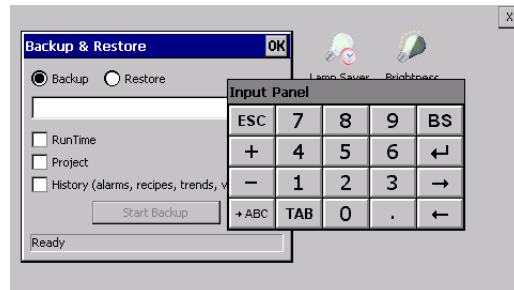


By enabling the Lamp Saver, the lamp switches off after a time set in the Wait box.

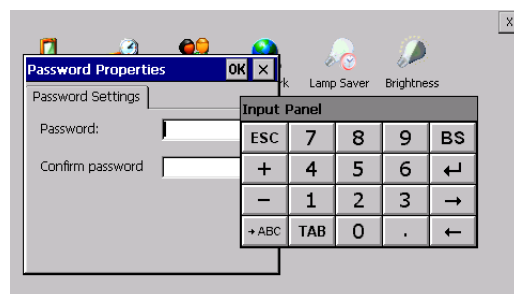
**Brightness**



The Brightness allows regulating the brightness of the display lamp.

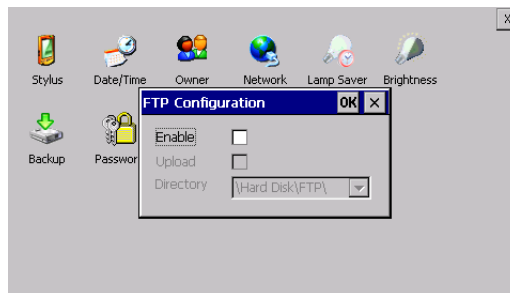
**IT104 Video terminal****Backup**

A backup copy of the components chosen through ticking can be made from here: Runtime, Project, History. It is essential to tick at least one of the components to be exported and choose a path where to save the file. The restore can be done for all exported components or through ticking, choose the component or components for which restore is to be carried out.

**Password**

The Password option allows assigning a password to the terminal. The password is requested (not compulsorily) during the use of the "Remote Desktop" application.

**FTP**

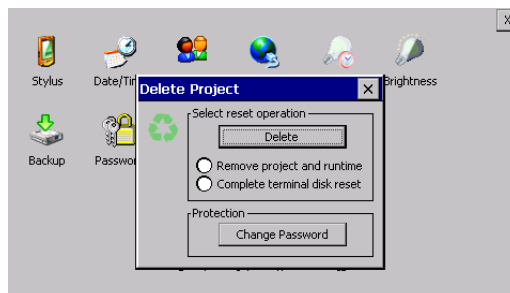


The "FTP" acronym means "Files Transfer Protocol". It gives the user the possibility to enable and disable the "FTP Server" service of the panel from any other device (PC,XS,IT,YT) connected to the network.

This function is very useful when it is necessary to write, cancel or modify data on the terminal easily from a remote access.

Selecting the "Enable" option, the "FTP" folder sharing service in the "Hard Disk" directory is enabled :

**Reset**



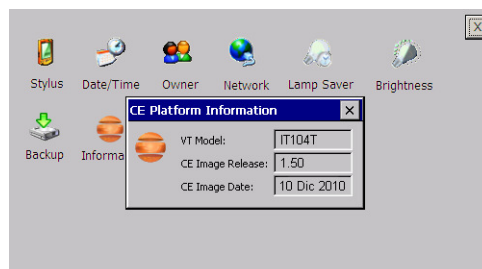
"Reset" is an application of the terminal control panel which allows to cancel all that been transferred onto the Hard Disk. Selecting the "Enable" option, the "FTP" folder sharing service in the "Hard Disk" directory is enabled.

The user can choose from 2 options :

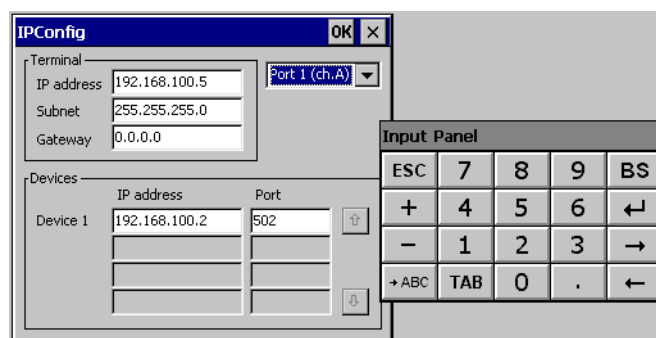
**IT104 Video terminal**

-“Remove project and runtime” -> choosing this option, both the project and the runtime that have been transferred from Polymath onto the terminal will be cancelled.

-“Complete terminal disk reset” -> choosing this option, the whole content of the “Hard Disk” folder will be cancelled, with the exception of the files that are essential for operating the terminal.

**Information**

The information shown regards the panel, e.g.: terminal model, revision of the Windows CE image and image data.

**IP Config**

By clicking on the "IP Config" icon, the mask displaying the IP Address of the terminal and IP Address (or IP Addresses) of the devices connected via Ethernet will appear. The function "IP Config" is useful in that it is possible to change the addresses of the devices without having to use the

## **32** Chapter 5

### **IT104 Video terminal**

POLYMATH configuration software (very useful operation during the system's start-up).

By using the appropriate key "Input Panel", the user can carry out any variations to the IP addresses of the devices directly from the ESA terminal.